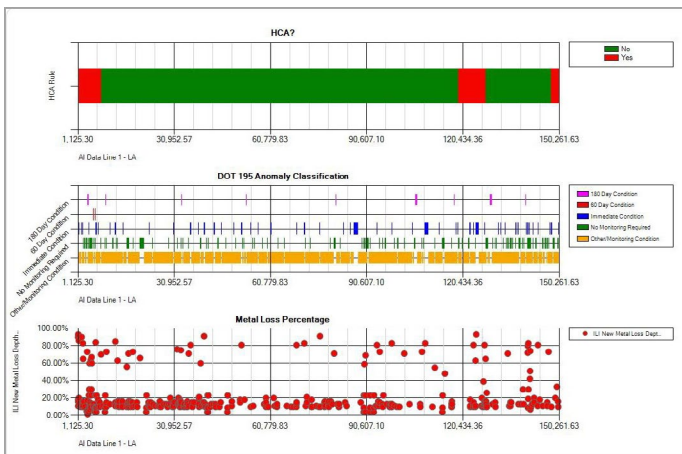


Comply with ILI Regulations and Dig Smarter

The RIPL In-Line Inspection Management Module helps you:

- Adhere to ILI regulations like 49 CFR parts 195.452 and 192.933
- Schedule your next assessment activity
- Prioritize anomalies
- Optimize your budgets for remediation and reinspection



By comparing anomaly sites against high-consequence areas, the RIPL In-Line Inspection Management Module helps you prioritize your digs so you can focus on your most critical anomalies.

Because intelligent pigging is so popular, operators are contending with a tidal wave of ILI data. The ILI Management Module stores this information in a central repository and supplements it with risk assessment records already in RIPL. This allows you to correlate additional data – such as HCA boundaries, close interval survey results and cathodic protection records – giving you a more complete view of any anomalies uncovered during an ILI run. The module also includes a scheduling feature that ensures you're compliant and that you don't miss your next assessment interval or required field verification.

RIPL In-Line Inspection Management Module

Key Benefits

Regulatory Compliance

Manage your ILI data according to regulations like 49 CFR 195.452 and CFR 192.933, industry best practices, and in-house requirements.

Anomaly Management

Track your anomalies from the discovery phase through evaluation, inspection and repair.

Technical Justification

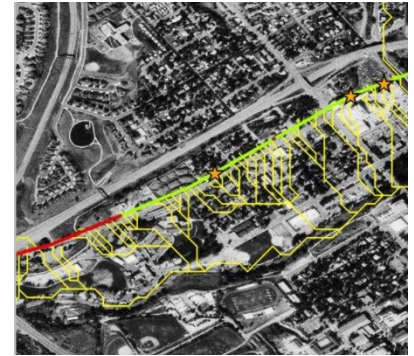
Make more informed decisions by aligning your ILI data with pipeline centerline and stationing, and by supplementing it with data from other inspections, like close interval or ACVG surveys.

Budget Optimization

Use anomaly growth and reassessment interval analyses to make decisions that will optimize your reinspection and dig budgets.

Analyzing the results of ILI surveys is critical to your pipeline integrity and risk management program. The ILI Inspection Management Module helps you do this more efficiently and cost-effectively. It gives you the ability to:

- Align ILI data to pipeline centerline and stationing
- Compare ILI data with other integrity information such as CI and CP data
- Normalize results and data from different vendors and tools
- Classify anomalies based on in-house or regulatory criteria
- Calculate remaining strength and safe operating pressures
- Prioritize anomaly dig sites
- Calculate short- and long-term corrosion growth rates based on industry standards
- Establish reinspection intervals based on anomaly growth rates
- Track and manage in-line inspection data through time
- Use reporting, linear graphing and GIS tools to better understand the impact an anomaly could have
- Prioritize monitoring and inspection activities using threat screening analysis and quantitative/qualitative risk ranking methods



Pinpoint high-priority anomalies by visualizing your ILI data and overlaying it with information like pipeline centerline or high-consequence areas.

For More Information

Services

Expect Relentless Service from our RIPL Technical Services team.

- Technical support via phone (800-229-3404) and email (ripltechservices@aiworldwide.com)
- Application services: implementation, data collection and loading, system integration and administration services

Contact

For more information, email us at im.sales@aiworldwide.com, call us at 303-948-0119, or visit us online at aiworldwide.com.

Visit aiworldwide.com for these resources

[RIPL Technical Support](#)

[Integrity Management Services](#)

[PCS & RIPL Admin Services](#)

[PCS & RIPL Implementation Services](#)

About American Innovations

American Innovations (AI) protects people and the environment by helping our customers safely and efficiently manage the world's energy infrastructure. We deliver proven compliance solutions to virtually every oil and gas transmission pipeline company in North America – from the field to the office. We provide an integrated family of hardware, software and professional services backed by relentless customer service. Our products include: Bullhorn® Remote Monitoring, MicroMax® Current Interrupters, Allegro Field Data PC™, PCS™ compliance software, and Risk Intelligence Platform (RIPL™) software. AI also provides a wealth of professional services including data migration, risk analysis, high consequence area (HCA) analysis, and regulatory compliance consulting.

V150714



aiworldwide.com

12211 Technology Blvd. • Austin, TX 78727

800-229-3404 • info@aiworldwide.com