

# Indirect Survey Manager



The Indirect Survey Manager (ISM) is a module within the Pipeline Compliance System (PCS<sup>™</sup>), the industry leader in managing compliance information for natural gas, hazardous liquids, and other pipeline systems. ISM manages and aligns External Corrosion Direct Assessment (ECDA) indirect inspection data.

- Close Interval
- DCVG (Direct Current Voltage Gradient)
- ACVG (AC Voltage Gradient)
- ACCA (AC Current Attenuation)
- Soil Resistivity

# Indirect Survey Manager

## Key Benefits

### Create custom reports and graphs with multiple survey types for year over year with spike filtering option

Review all surveys on one graph; layer year-over-year data alongside various types of surveys to identify degenerative situations

### Advanced capabilities include rubber-banding, reversal of readings, shift stationing, and appending surveys

Re-align station numbers for a survey and view data in a variety of ways for maximum survey efficiency

### Data import and export options, including integrated bridge reports

Import and export data via bridge in Excel, CSV, or similar file formats, as well as with third party contractors and vendors

### Multi-user design for replication and synchronization

Share critical data throughout an organization

### Collect, analyze, report, and graph close interval and DCVG survey data

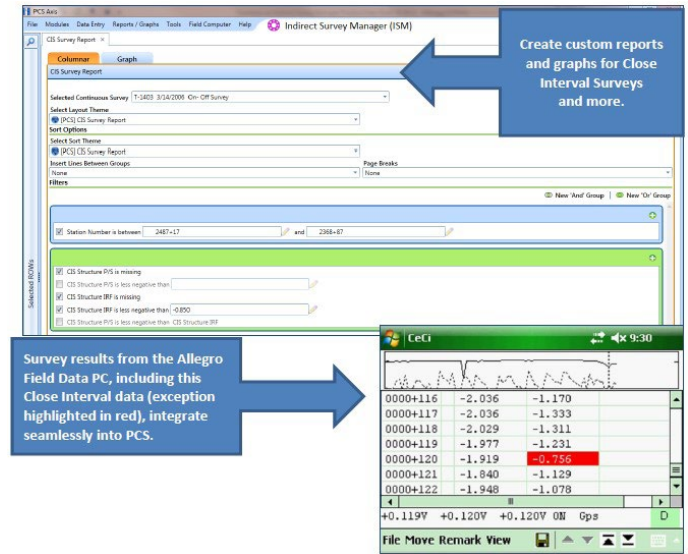
Exception reporting for interval surveys including  $-0.850$  mV criteria, % IR, dB level, and indication classification type

### Integration with Allegro Field Data PC™ and Bullhorn Web for accurate and verifiable CP data collection

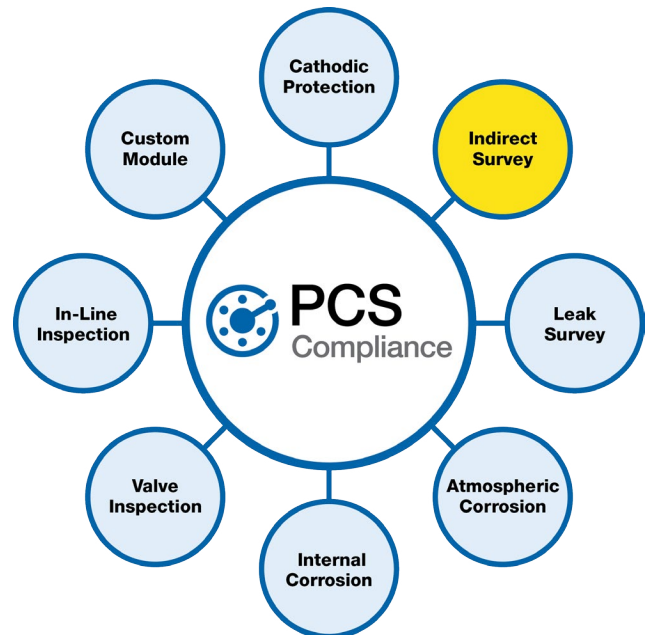
Increases productivity by creating a seamless workflow from data collection to reporting; prevents transcription errors

### Data exchange with GIS, risk assessment, work management, and other external applications

Integrate with current and future IT systems and processes



The Indirect Survey Manager aligns External Corrosion Direct Assessment (ECDA) indirect inspection data. Close interval survey data is captured and analyzed, ensuring compliance requirements defined in DOT 49 CFR, Parts 192 and 195 are met. Deficiency reports and graphs quickly reveal areas of concern leading to targeted maintenance and repair actions. GPS data is retained for clean integration with GIS and mapping applications.



# Server Computer Requirements

## Server Computer Requirements

Properties	Recommended
Processor:	Intel Xeon
Processor Speed:	2 Quad Core CPUs at 2.4GHz or faster
RAM:	32 GB (see note)
Operating System:	Windows Server 2008 R2
Relational Database Software:	SQL Server 2008 R2
Available Disk Space:	100 GB (see note)
Screen Resolution:	1920x1080

## Client Computer Requirements

Properties	Recommended
Processor:	Intel Core i7
Processor Speed:	2.3 GHz or faster
RAM:	8 GB
Operating System:	Windows 7 64-bit, Service Pack 1 (SP1)
Available Disk Space:	720 GB (see note)
Screen Resolution:	1920x1080
Microsoft .NET Framework:	Version 4.5 (see note)

### Notes:

- Microsoft .NET Framework: If the target computer does not have Microsoft .NET Framework v4.5 installed, the PCS Axis installation automatically installs it for you. This feature requires an active Internet connection to complete the installation of .NET Framework v4.5.
- Microsoft SQL Server Express 2008 R2 SP2, 64-bit: For client systems that wish to use Synchronization, a 64-bit version of Microsoft SQL Server 2008 Express R2 SP2 (or Standard edition for databases exceeding 10 GB) must be installed on the subscriber's computer (the remote client). Once PCS Axis is installed, a subscription database must be created on the subscriber's computer prior to working off-line.
- Disk Space with Synchronization: If using a remote client to subscribe to and synchronize with a central database, sufficient disk space must be reserved for database use (11 GB when using Microsoft SQL Server 2008 Express).

# For More Information

## Services

Expect Relentless Service from our PCS Technical Services team.

- Technical support via phone and email
- Product training, offered at your place of business or ours
- Application services: implementation, data collection and loading, system integration and administration services

## Contact

For more information, email us at [pcsa\\_sales@aiworldwide.com](mailto:pcsa_sales@aiworldwide.com), call us at **800-229-3404**, or visit us online at [aiworldwide.com](http://aiworldwide.com).

## Visit [aiworldwide.com](http://aiworldwide.com) for These Resources

[PCS Why Should I Upgrade?](#)

[PCS Support](#)

[PCS Axis Help](#)

## About American Innovations

American Innovations (AI) protects people and the environment by helping our customers safely and efficiently manage the world's energy infrastructure. We deliver proven compliance solutions to virtually every oil and gas transmission pipeline company in North America – from the field to the office. We provide an integrated family of hardware, software and professional services backed by relentless customer service. Our products include: Bullhorn® Remote Monitoring, MicroMax® Current Interrupters, Allegro Field Data PC™, PCS™ compliance software, and Risk Intelligence Platform (RIPL™) software. AI also provides a wealth of professional services including data migration, risk analysis, high consequence area (HCA) analysis, and regulatory compliance consulting.

150722



[aiworldwide.com](http://aiworldwide.com)

12211 Technology Blvd. • Austin, TX 78727

800-229-3404 • [info@aiworldwide.com](mailto:info@aiworldwide.com)